

## Ashlar-Vellum Channel Partner Newsletter September 2008

### Graphite v8 Service Pack 1 Released

Graphite v8 SP1 was released on September 15th. This free update is available to everyone on Graphite v8 including Cobalt and Xenon v8 users with courtesy licenses to Graphite.

All users were notified by email and a press release was distributed.

Ashlar-Vellum president, Robert Bou, commented, "This Service Pack delivers significantly upgraded AutoCAD interoperability along with further

improvements to our PDF export. This one-two punch further enables seamless and continuous cross team communications, a key component of Ashlar-Vellum's Organic Workflow™."

The highlights of Graphite v8 SP1 include:

- Improved DWG/DXF translation including import of AutoCAD layouts with their views into Graphite sheets.
- Improved PDF smart-data export including support for

more fonts and line weights.

- Support for AutoCAD DWG/DXF 2008.
- Improved printing of diagonal lines (Mac).
- Optimizations for the Intel Mac with a performance increase of 3X on zoom, pan and selection functions, and 2X for file loading under Leopard.

To download the update, go to [www.ashlar.com/v8](http://www.ashlar.com/v8).

### New Banner

The Graphite v8 SP1 release is being announced on the website with a new banner.



### Hot Patch for Graphite v8 SP1 Released

A new hot patch for Graphite v8, build 841, was released earlier this week fixing the following issues that appeared on Mac only.

Ashlar-Vellum Channel Partner Newsletter

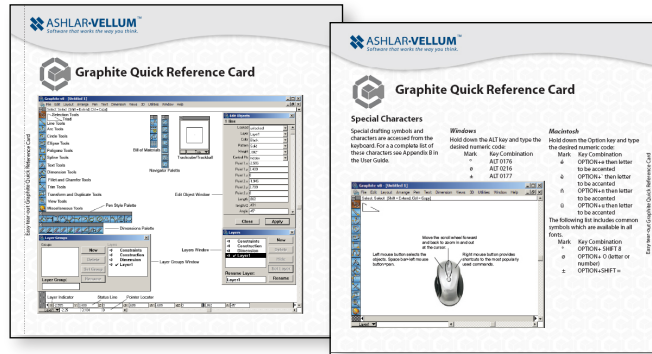


September 2008

- Rotated text now prints correctly on Intel Macs
- Document icon correctly appears.

## Graphite Quick Reference Card Available

A Graphite Quick Reference Card has been created and is available for download from our website under **Support>Documentation**. This reference fits on both sides of a single sheet and is a handy guide to remembering Graphite shortcuts for those who are new to the software.



## Cobalt, Xenon & Argon v8 Service Pack 1 Update

Cobalt, Xenon and Argon v8 SP1 is now in final beta. This version includes:

- Optimization for Intel Mac.
- AutoCAD 2008 DXF/DWG support.
- Advanced hole creation and drill access.
- Direct support for imprinting profile sketches onto surfaces and solids to create surface subdivisions.
- Enhanced lathe tools that support non-planer profiles.
- Colors assigned for each face.
- Materials assigned for each face.
- ClarisCAD import.
- Scores of minor bug fixes.

## Nisha Patel Named Director of Customer Service

Nisha Patel is being promoted to Director of Customer Service where she will be in charge of expanding our customer service coverage hours, including email and telephone support for registration codes, by establishing representatives in various times zones around the globe. The



first goal will be to cover and expand our normal US business hours, then increase the hours and days to support customer demand. Nisha's mix of technical and people skills have made her a favorite among our customers. Now she will be developing those skills in others.

## Q3 User Newsletter

The third quarter edition of *The Design Explorer*, Ashlar-Vellum's user newsletter was published this month and sent to all customers and database prospects via email. In addition to the Graphite v8 SP1 release announcement and an

update on the Cobalt, Xenon and Argon v8 SP1 beta, the newsletter included articles on improved PDF Export in Graphite, why drawings sometimes look like tiny specks, and updated information on file naming.

